

# TARABUS

FLOORING FOR BUS & COACH INTERIORS



**Gerflor**<sup>®</sup>  
theflooringgroup



# TARABUS

BY GERFLOR

With over 60 years of experience, Gerflor offer a comprehensive range of floorings specifically engineered to meet the most stringent requirements of Transportation markets. Gerflor develop reliable and long-term partnerships with manufacturers and worldwide operators.

**TARABUS** products are especially designed for Bus & Coach interiors and meet the international requirements and demands of the industry:

**Lightweight products** with a 20% weight reduction to reduce fuel consumption and carbon footprint.

**Exceptional wear resistance** for high traffic areas.

**Slip resistance** on dry and wet surfaces to ensure passenger safety.

**Ease of cleaning** to optimize the cleaning process and ensure your flooring looks as it should over the time.

**Advance and stylish decorative patterns** to enhance the passenger experience.

**Sustainable technical solutions** to improve the efficiency of the assembly lines and avoid installation wastage.

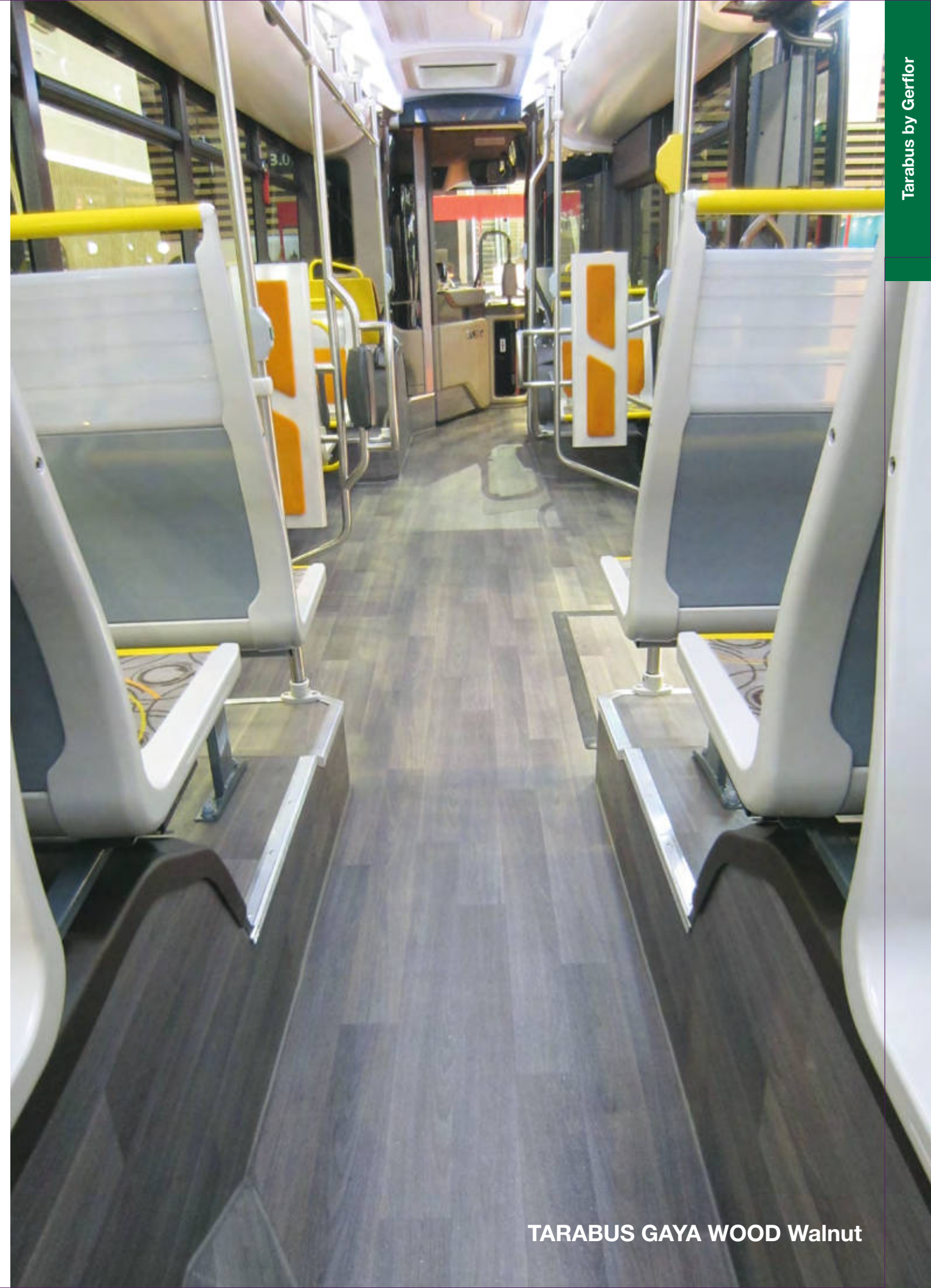
**High level of service** to ensure on time deliveries.

**Team of experts** to provide our customers with outstanding sales and technical support.

By choosing **TARABUS**, you are choosing the benchmark of the Bus & Coach flooring.

## OUR MISSION STATEMENT

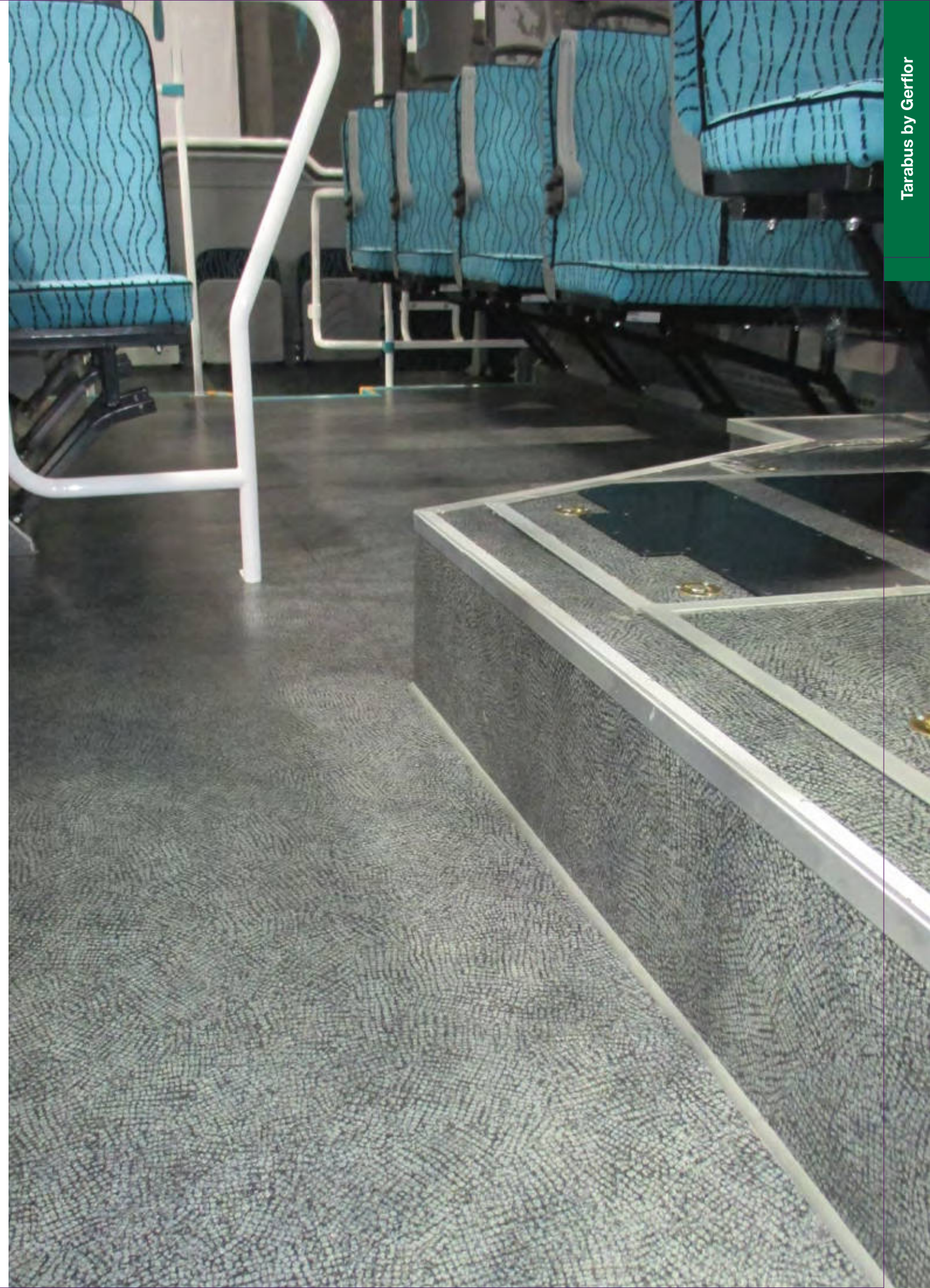
- To create, manufacture and market innovative, design-led and eco-responsible solutions for flooring and complementary interior finishes.
- To anticipate the specific needs of users, specifiers and installers around the world.
- To provide competitiveness and success for all our customers.





# TARABUS

## INTERNATIONAL REFERENCES





# TARABUS

## SUSTAINABLE SOLUTIONS

### we care / we act

Our Commitments for a Sustainable future

We design and manufacture our flooring solutions, keeping in mind our responsibility towards our teams, our customers and our environment. We set ourselves the highest standards in terms of health and well-being.

Gerflor has always set the principles of the circular economy at the heart of its industrial processes. We are pursuing our objectives of profitable growth while proactively managing our environmental and social impacts.

Gerflor has now structured its CSR approach around a much more global ambition: have a positive impact on our direct sphere of influence – our employees, our products, our customers, - and more broadly on society and the environment.

**We care, we act** is more than a slogan, it is a vision that guides us every day vis-à-vis our teams, our customers, our communities and the planet.

Gerflor are committed to help the Bus & Coach industry reducing its carbon footprint.

### ECO-DESIGN

- Our raw materials are **100% REACH compliant**, free from heavy metals and DEHP plasticizer, to minimize our impact on the environment.
- Tarabus floorings are **very light weight**, reducing fuel consumption and CO<sup>2</sup> & NOx emissions.
- Our products meet the most stringent requirements in terms of durability. They are designed to **last the life of the vehicle**.
- Our products have **very low emissivity** (low VOC emission).
- Tarabus compacted non-porous wear layers are **easy to clean**, minimizing the consumption of water and detergent

### SUSTAINABLE TECHNICAL SOLUTIONS

- **Tarabus Self-Adhesive**, the most environmentally friendly bonding solution :
  - ✓ Cut VOC emissions
  - ✓ Eliminate all fumes and odours associated with traditional adhesives
  - ✓ Reduce weight compared to traditional adhesives
  - ✓ Improve the working conditions of the floor fitters.
- **Pre-cut services** reducing the environmental footprint of installation :
  - ✓ Collect and manage flooring waste before the floor is shipped
  - ✓ Minimize offcuts via production optimization
  - ✓ Lower weight carried during shipment
  - ✓ Back welding option improves durability and ease of cleaning of the flooring (no contact with traffic, no trap for dirt)

### ECO-EFFICIENT PLANTS

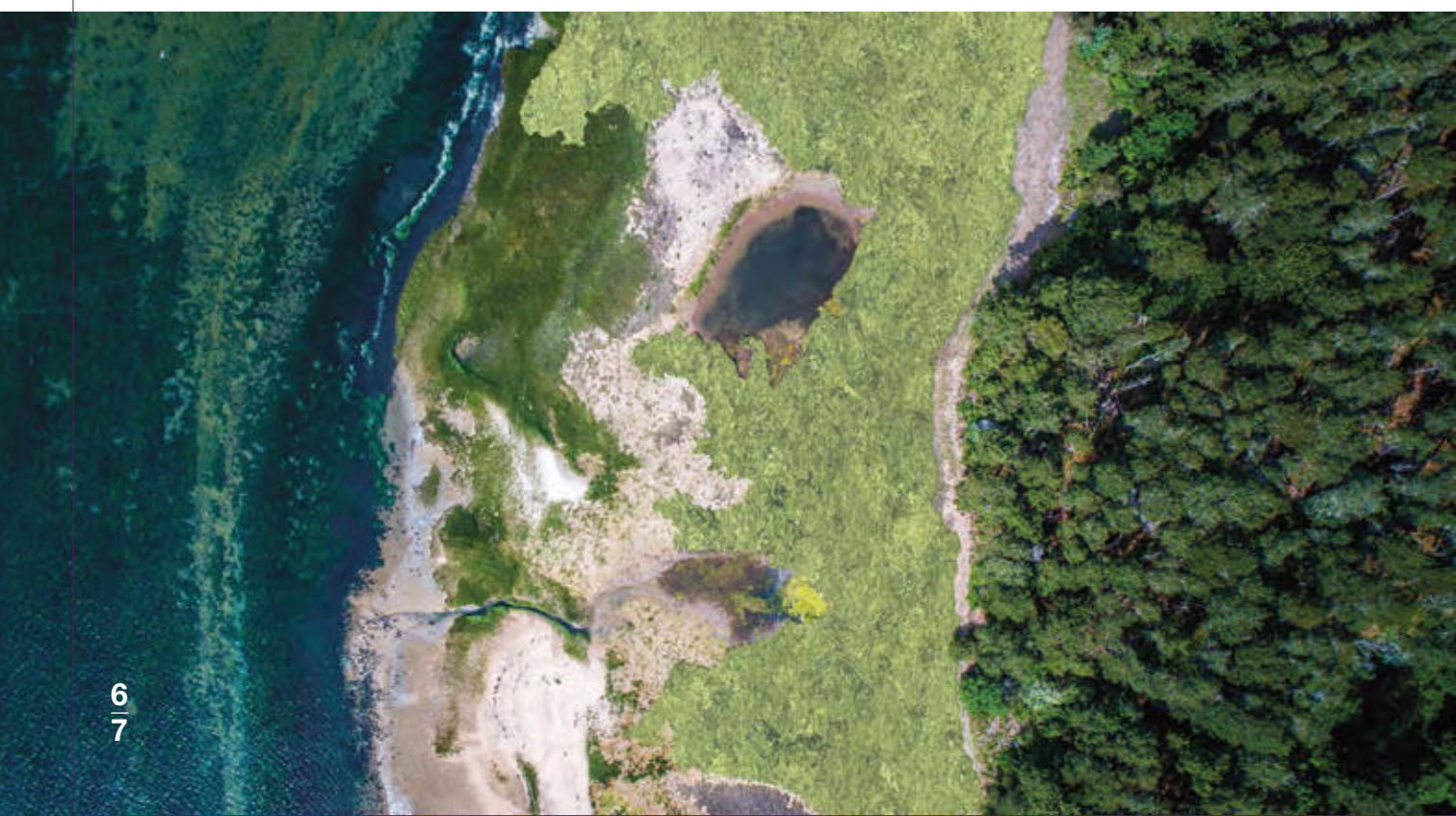
AFNOR CERTIFICATION

AFNOR CERTIFICATION

AFNOR CERTIFICATION

UVE STEP

ELECTRICITY <b>100%</b> Green	ENERGY <b>-10%</b> in 3 years	WATER <b>-85%</b> in 20 years
-------------------------------------	-------------------------------------	-------------------------------------





# TARABUS



## THE LIGHTEST STRONGEST FLOORING

**0.5kg/m<sup>2</sup>**  
weight saving



=



**easier & safer to handle**  
24kg weight reduction per roll

**more profitable**  
significant fuel saving

**environmentally friendly**  
lower CO<sub>2</sub> emissions

**+ same great performance & thickness as always**

New lightweight Tarabus for: Sirius | Luna | Apollo | Helios | Jupiter | Jupiter Metallic | Safebus

# TARABUS

## TECHNICAL DATA



		Sirius / Helios / Luna / Apollo NT	Jupiter NT	Jupiter Metallic NT	Safebus NT
• Roll width		200 cm (+1. -0 cm)	200 cm (+1. -0 cm)	200 cm (+1. -0 cm)	200 cm (+1. -0 cm)
• Roll length		24 lm	24 lm	24 lm	20 lm
• Thickness	ISO 24 346	2.25 ± 0.15 mm	2.25 ± 0.15 mm	2.25 ± 0.15 mm	2.25 ± 0.15 mm
• Weight per m <sup>2</sup>	ISO 23 997	✓ 2.20 ± 0.15 kg/m <sup>2</sup>	✓ 2.20 ± 0.15 kg/m <sup>2</sup>	✓ 2.20 ± 0.15 kg/m <sup>2</sup>	✓ 2.30 ± 0.15 kg/m <sup>2</sup>
• Dimensional stability	ISO 23 999 ASTM D 1204	≤ 0.3 %	≤ 0.3 %	≤ 0.3 %	≤ 0.3 %
• Abrasion resistance	ISO 9352 (TABER)	≤ 300 mg	≤ 300 mg	≤ 300 mg	≤ 300 mg
• Slip resistance	EN 16165 Annex B (DIN 51130)	R10	R9	R9	R10
• Indentation test	ISO 24 343-1	average ≈ 0.09 mm	average ≈ 0.09 mm	average ≈ 0.09 mm	average ≈ 0.09 mm
• Low temperatur resistance	D 42 1235 A	- 20°C	- 20°C	- 20°C	- 20°C
• Phonic insulation	ISO 717/2	ΔI = 5 dB	ΔI = 5 dB	ΔI = 5 dB	ΔI = 5 dB
• Colour fastness	ISO 105 B02 ISO 4582/80 ASTM D 4459	≥ 7	≥ 7	≥ 7	≥ 7
• Fire resistance	ISO 3795/76 FMVSS 302 ASTM E 648 R 118	0 mm/mn Conform (Ignited but extinguished) Class 1 Conform			
• Chemical agent resistance	ISO 26 987	Unaffected by diluted acids and bases Unaffected by domestic products Excluding solvents for plasticized PVC			

		Gaya Wood Gaya Mosaic		Venus	Safebus	Apollo / Helios / Sirius / Jupiter
		NT	MK	NT	MK	MK
• Roll width		200 cm (+1. -0 cm)	196 cm (+1. -0 cm)	200 cm	196 cm	196 cm (+1. -0 cm)
• Roll length		24 lm	15 lm	(+1. -0 cm) 24 lm	(+1. -0 cm) 15 lm	15 lm
• Thickness	ISO 24 346	2.25 ± 0.15 mm	6.2 ± 0.3mm	3.00 ± 0.15 mm	6.0 ± 0.3 mm	6.20 ± 0.30 mm
• Weight per m <sup>2</sup>	ISO 23 997	2.70 ± 0.15 kg/m <sup>2</sup>	4.12 ± 0.30 kg/m <sup>2</sup>	3.05 ± 0.15 kg/m <sup>2</sup>	3.75 ± 0.30 kg/m <sup>2</sup>	3.65 ± 0.30 kg/m <sup>2</sup>
• Dimensional stability	ISO 23 999 ASTM D 1204	≤ 0.3 %	≤ 0.3 %	≤ 0.3 %	≤ 0.3 %	≤ 0.3 %
• Abrasion resistance	ISO 9352 (TABER)	≤ 300 mg	≤ 300 mg	≤ 300 mg	≤ 300 mg	≤ 300 mg
• Slip resistance	EN 16165 Annex B (DIN 51130)	R10	R10	R10	R10	R10 Jupiter R9
• Indentation test	ISO 24 343-1	average ≈ 0.09 mm	average ≈ 0.6 mm	average ≈ 0.09 mm	average ≈ 0.6 mm	average ≈ 0.6 mm
• Low temperature resistance	D 42 1235 A	- 20°C	- 20°C	- 20°C	- 20°C	- 20°C
• Phonic insulation	ISO 717/2	ΔI = 5 dB	ΔI = 22 dB	ΔI = 5 dB	ΔI = 22 dB	ΔI = 22 dB
• Colour fastness	ISO 105 B02 ISO 4582/80 ASTM D 4459	≥ 6	≥ 6	≥ 7	≥ 7	≥ 7
• Fire resistance	ISO 3795/76 FMVSS 302 ASTM E 648 R 118	0 mm/mn Conform (Ignited but extinguished) Class 1 Conform				
• Chemical agents resistance	ISO 26 987	Unaffected by diluted acids and bases Unaffected by domestic products Excluding solvents for plasticized PVC				

# TARABUS

## PART NUMBERS

FLOOR COVERINGS			
<b>GAYA WOOD Walnut</b>			
Everglades	6057	NT 200 cm x 24 lm	441D6057
		MK 196 cm x 15 lm	509G6057
Kruger	3724	NT 200 cm x 24 lm	441D3724
Wapusk	4362	NT 200 cm x 24 lm	441D4362
Yellowstone	4521	NT 200 cm x 24 lm	441D4521
		MK 196 cm x 15 lm	371S4521
<b>GAYA WOOD Noma</b>			
Yosemite	8297	NT 200 cm x 24 lm	441G8297
<b>GAYA MOSAIC</b>			
Babel	4482	NT 200 cm x 24 lm	441A4482
		MK 196 cm x 15 lm	371P4482
Eiffel	8070	NT 200 cm x 24 lm	441A8070
Galata	4519	NT 200 cm x 24 lm	441A4519
<b>LUNA</b>			
Egypt	8414	NT 200 cm x 24 lm	572T8414
Norway	8729	NT 200 cm x 24 lm	572T8729
Singapore	8816	NT 200 cm x 20 lm	572T8816
<b>HELIOS</b>			
Cerium	3737	NT 200 cm x 24 lm	667P3737
Dubnium	4483	NT 200 cm x 24 lm	667P4483
		MK 196 cm x 15 lm	371I4483
Gallium	8803	NT 200 cm x 24 lm	667O8803
		MK 196 cm x 15 lm	371J8803
Indium	3740	NT 200 cm x 24 lm	667O3740
Palladium	8805	NT 200 cm x 24 lm	667O8805
		MK 196 cm x 15 lm	371J8805
Rhenium	8072	NT 200 cm x 24 lm	667O8072
Rhodium	8806	NT 200 cm x 24 lm	667O8806
		MK 196 cm x 15 lm	371J8806
Samarium	8031	NT 200 cm x 24 lm	667P8031
Scandium	8333	NT 200 cm x 24 lm	667P8333
		MK 196 cm x 15 lm	371I8333
Selenium	8804	NT 200 cm x 24 lm	667P8804
		MK 196 cm x 15 lm	371I8804
Thorium	4114	NT 200 cm x 24 lm	667P4114
Vanadium	8486	NT 200 cm x 24 lm	667O8486

WELDING RODS		
CR50	CA72	COLOUR
H0092565	H0072565	Beige 2565
H0092565	H0072565	Beige 2565
H0092569	H0072569	Brown 2569
H0090462	H0070462	Brown 0462
H0092566	H0072566	Beige 0357
H0092566	H0072566	Beige 0357
CR50	CA72	COLOUR
H0092299	H0072299	Light Brown 2299
CR50	CA72	COLOUR
H0092412	H0072412	Grey 2412
H0092412	H0072412	Grey 2412
H0092567	H0072567	Grey 0307
H0092570	H0072570	Grey 0309
CR50	CA72	COLOUR
H0090027	H0070008	Dark Blue 0905
H0090037	H0070015	Dark Grey 0918
H0090048	H0070023	Dark Grey 2932
CR50	CA72	COLOUR
H0092562	H0072562	Dark Grey 2562
H0092561	H0072561	Dark Grey 2561
H0092561	H0072561	Dark Grey 2561
H0090232	H0070232	Dark grey 0611
H0090232	H0070232	Dark grey 0611
H0092563	H0072563	Black 2563
H0090048	H0070023	Dark Grey 2932
H0090048	H0070023	Dark Grey 2932
H0092573	H0072573	Light Brown 2573
H0090232	H0070232	Dark Grey 0611
H0090232	H0070232	Dark Grey 0611
H0092918	H0072918	Dark Grey 2918
H0090252	H0070252	Grey 0252
H0090252	H0070252	Grey 0252
H0090041	H0070017	Grey 0075
H0090041	H0070017	Grey 0075
H0092572	H0072572	Red 2572
H0090194	H0070194	Dark Blue 2917

FLOOR COVERINGS			
<b>APOLLO</b>			
Everest	8065	NT 200 cm x 24 lm	534S8065
		MK 196 cm x 15 lm	371L8065
Fuji	4517	NT 200 cm x 24 lm	534S4517
		MK 196 cm x 15 lm	371L4517
Kilimanjaro	4479	NT 200 cm x 24 lm	534S4479
		MK 196 cm x 15 lm	371L4479
Masan	4776	NT 200 cm x 24 lm	534S4776
		MK 196 cm x 15 lm	371L4776
<b>SIRIUS</b>			
Anthracite	6727	NT 200 cm x 24 lm	507Y6727
		MK 196 cm x 15 lm	509F6727
Corsaire	6451	NT 200 cm x 24 lm	507Y6451
Dune	6782	NT 200 cm x 24 lm	507Y6782
		MK 196 cm x 15 lm	509F6782
Graphite	6801	NT 200 cm x 24 lm	372C6801
		MK 196 cm x 15 lm	509F6801
Griffon	6768	NT 200 cm x 24 lm	507Y6768
		MK 196 cm x 15 lm	509F6768
Light Blue	6434	NT 200 cm x 24 lm	507Y6434
Rubis	6132	NT 200 cm x 24 lm	507Y6132
Seram	4461	NT 200 cm x 24 lm	507Y4461
<b>JUPITER</b>			
Adraste Blau	8736	NT 200 cm x 24 lm	371D8736
Elara Rot	8764	NT 200 cm x 24 lm	371D8764
Hessen	4758	NT 200 cm x 24 lm	371D4758
Labrador	8760	NT 200 cm x 24 lm	371D8760
Shetland	8761	NT 200 cm x 24 lm	371D8761
Tahiti	8485	NT 200 cm x 24 lm	371D8485
<b>JUPITER METALLIC</b>			
Hudson	6793	NT 200 cm x 24 lm	371E6793
Mekong	8501	NT 200 cm x 24 lm	371E8501
Murray	8114	NT 200 cm x 24 lm	371E8114
Nile	8796	NT 200 cm x 24 lm	371E8796
Volga	8401	NT 200 cm x 24 lm	371E8401
<b>SAFEBUS</b>			
Borneo	6203	NT 200 cm x 20 lm	601J6203
		MK 196 cm x 15 lm	371Q6203
Caledonia	6602	NT 200 cm x 20 lm	601J6602
<b>VENUS NT</b>			
Anthracite	6727	NT 200 cm x 24 lm	546F6727
Schwarzwald	4419	NT 200 cm x 24 lm	546F4419

WELDING RODS		
CR50	CA72	COLOUR
H0092423	H0072423	Dark Brown 2423
H0092423	H0072423	Dark Brown 2423
H0092272	H0072272	Dark Grey 2272
H0092272	H0072272	Dark Grey 2272
H0092272	H0072272	Dark Grey 2272
H0092272	H0072272	Dark Grey 2272
H0090108	H0070014	Black 0751
H0090108	H0070014	Black 0751
CR50	CA72	COLOUR
H0090245	H0070245	Dark Grey 0245
H0090245	H0070245	Dark Grey 0245
H0090024	H0070005	Dark Blue 0903
H0090039	H0070016	Grey 0919
H0090039	H0070016	Grey 0919
H0090054	H0070027	Black 0675
H0090054	H0070027	Black 0675
H0090041	H0070017	Grey 0075
H0090041	H0070017	Grey 0075
H0092115	H0072115	Medium Blue 2921
H0090620	H0070028	Red 2942
H0092475	H0072475	Blue 2475
CR50	CA72	COLOUR
H0090107	H0070038	Grey 0151
H0090245	H0070245	Dark grey 0245
H0090222	H0070222	Dark Grey 0458
H0090044	H0070020	Grey 0682
H0090091	H0072114	Dark Grey 0708
H0090044	H0070020	Grey 0682
CR50	CA72	COLOUR
H0090108	H0070014	Black 0751
H0090108	H0070014	Black 0751
H0090108	H0070014	Black 0751
H0090108	H0070014	Black 0751
H0090108	H0070014	Black 0751
CR50	CA72	COLOUR
H0090053	H0070026	Yellow 2938
H0090053	H0070026	Yellow 2938
H0090618	H0070618	Light Beige 0097
CR50	CA72	COLOUR
H0090245	H0070245	Dark Grey 0245
H0092574	H0072574	Blue 2574

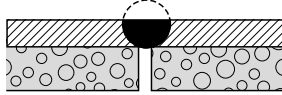
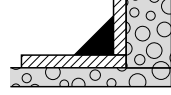

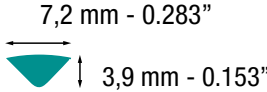




# TARABUS

## ACCESSORIES

- Welding rods

CR 50	CA72
	
 ø 5 mm - 0.197"	 7,2 mm - 0.283" 3,9 mm - 0.153"
L: 100 m / 328'	

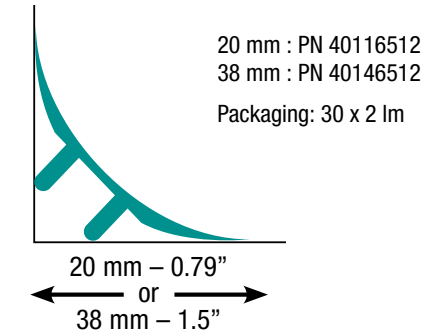
- Tools

Everything you need for installation.



Please contact your sales representative.

- Cove former

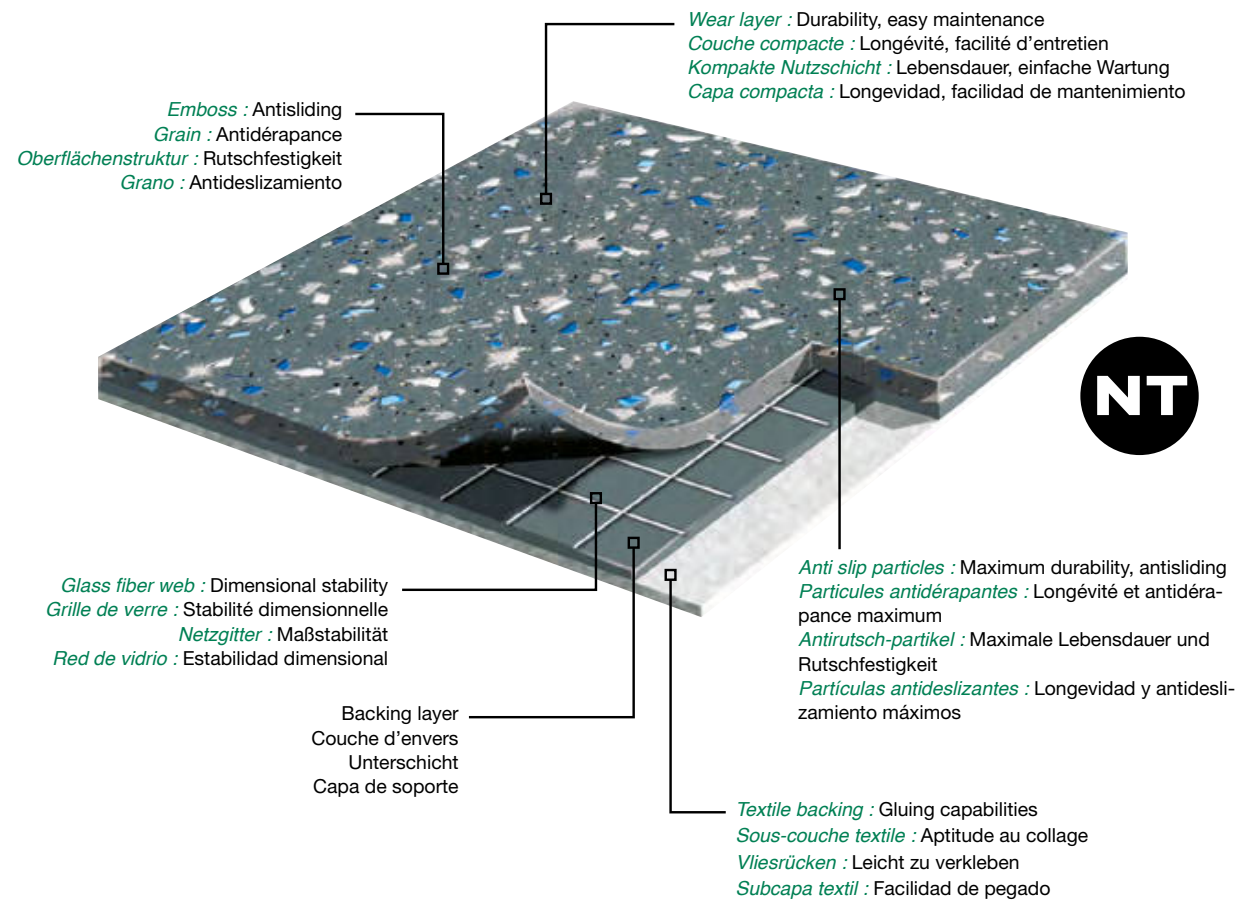


## TECHNICAL SUPPORT

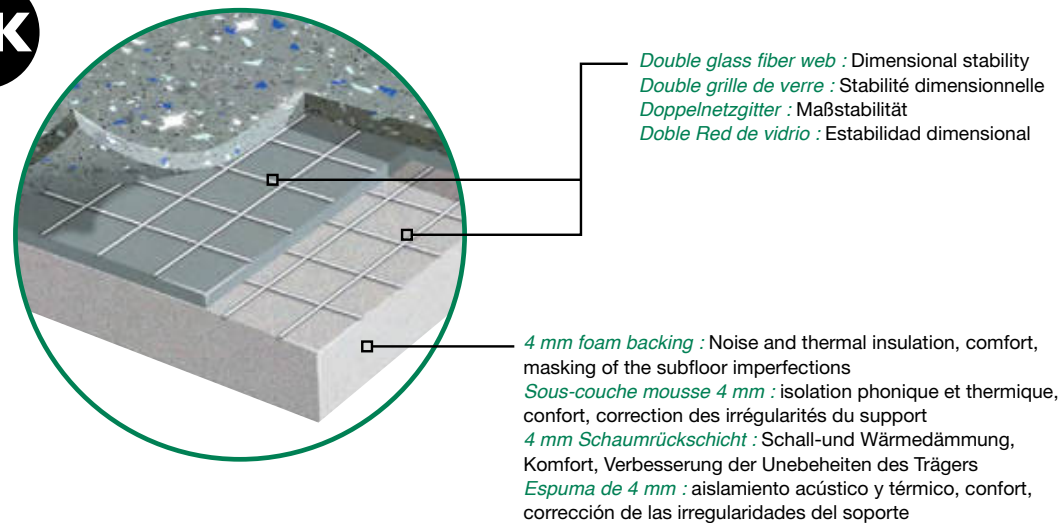
Gerflor has a team of specialists of the bus & coach sector with a design studio, R&D engineers, and installation experts to develop specific solutions that meet market needs.



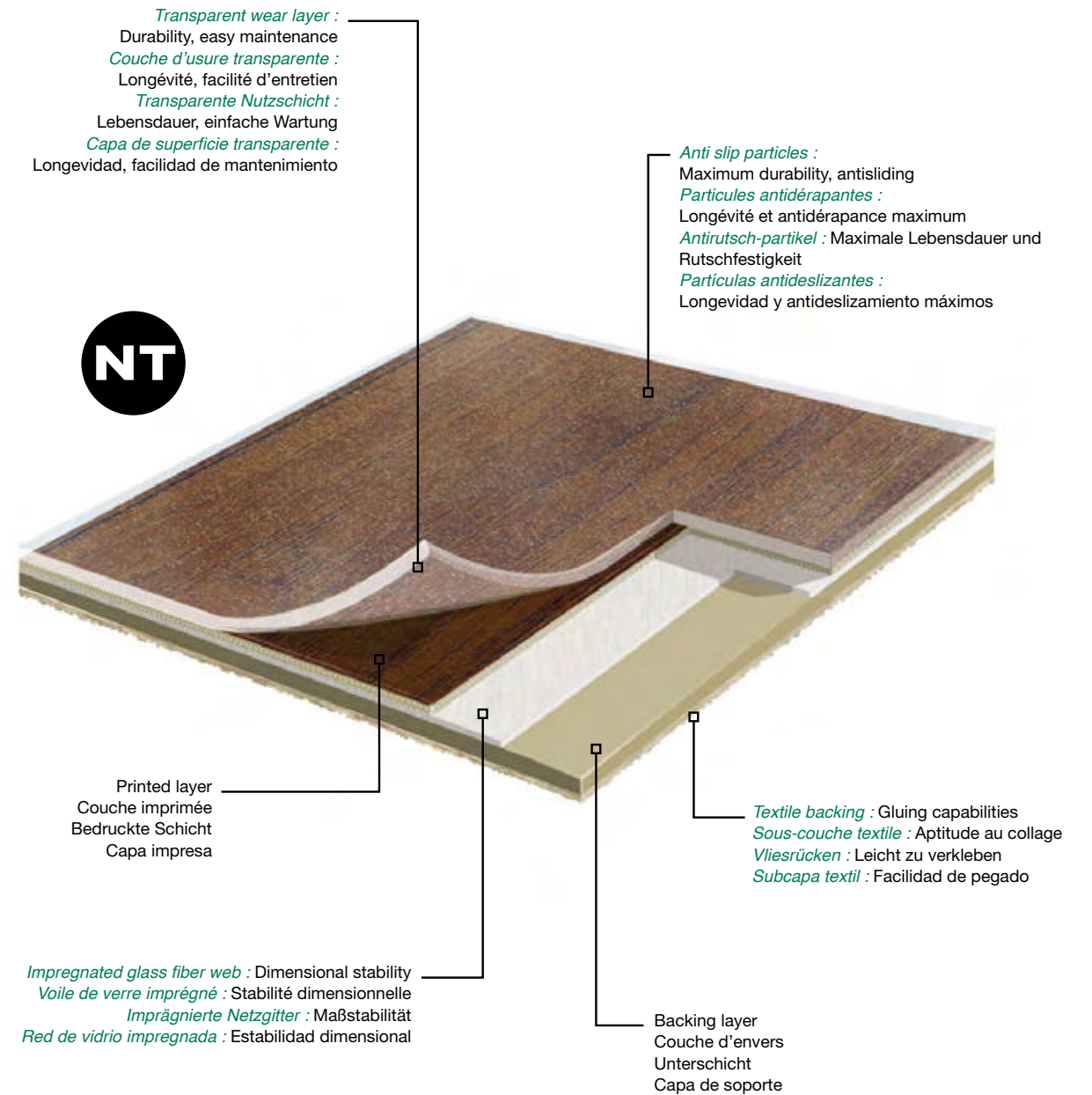
## ► Tarabus standard



**MK**



## ► Tarabus Gaya





# GAYA WOOD Walnut



NT

Wapusk 4362



NT

MK

Everglades 6057



NT

MK

Yellowstone 4521



NT

Kruger 3724

NT= Textile backing  
MK= Foam backing



GAYA WOOD Walnut

# GAYA WOOD Noma



NT

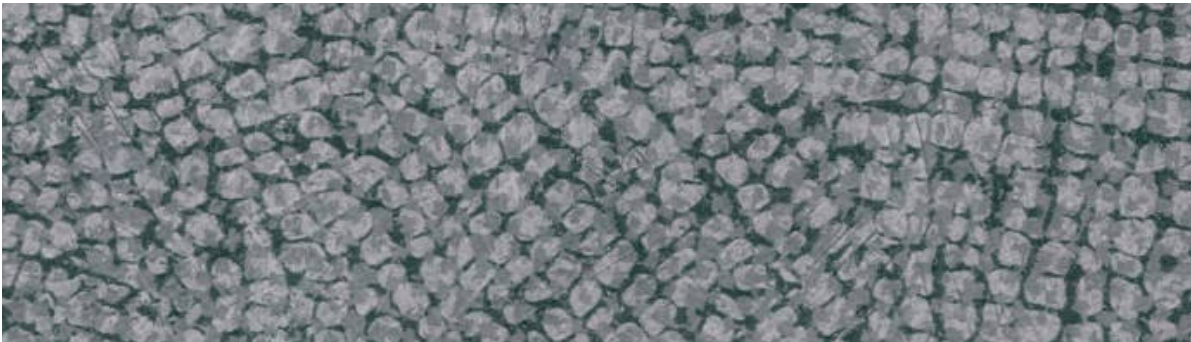
Yosemite 8297

NT= Textile backing





# GAYA MOSAIC



Babel 4482

NT  
MK



Galata 4519

NT



Eiffel 8070

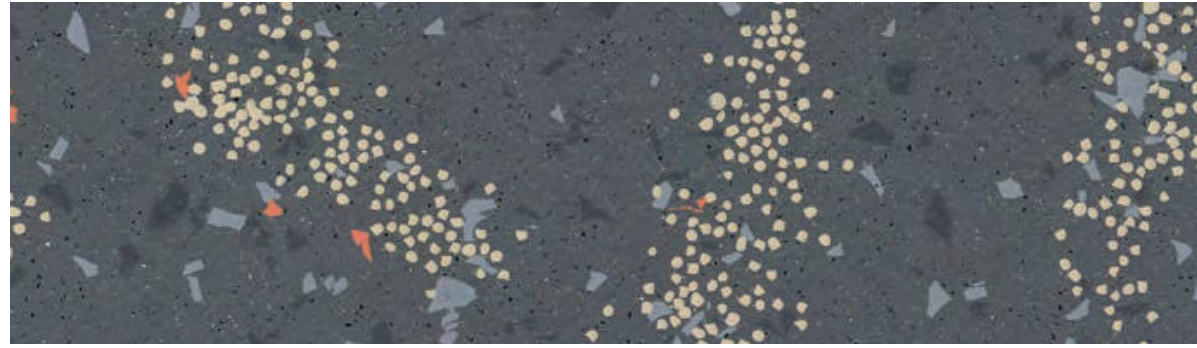
NT

NT= Textile backing  
MK= Foam backing



# LUNA

\*scale reduction



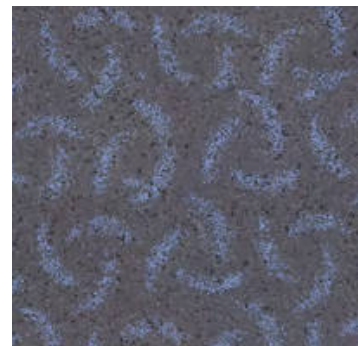
NT

Singapore 8816



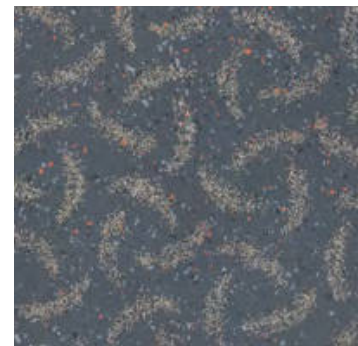
NT

Egypt 8414\*



NT

Norway 8729\*

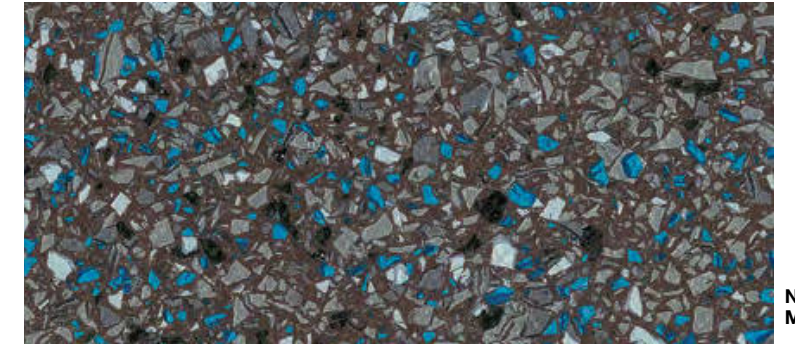


NT

Singapore 8816\*

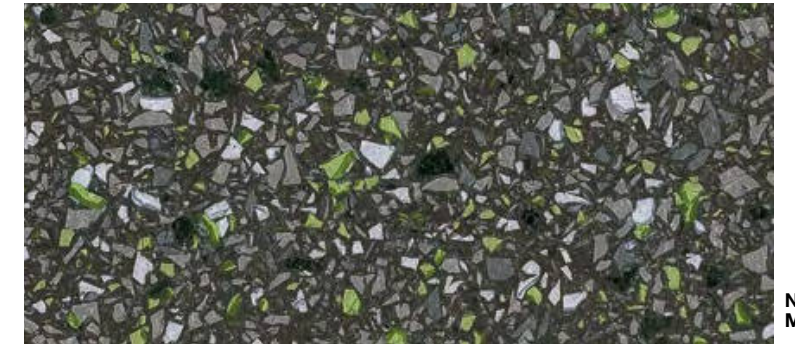


# APOLLO



NT  
MK

Kilimanjaro 4479



NT  
MK

Fuji 4517



NT  
MK

Everest 8065

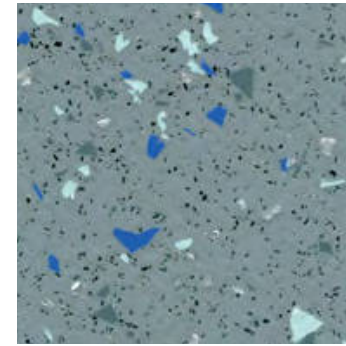


NT  
MK

Masan 4776

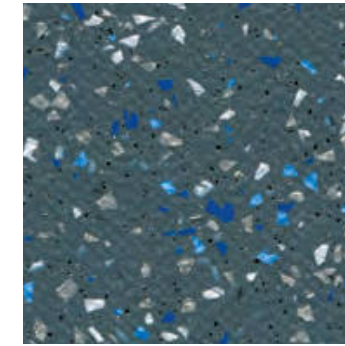


# HELIOS



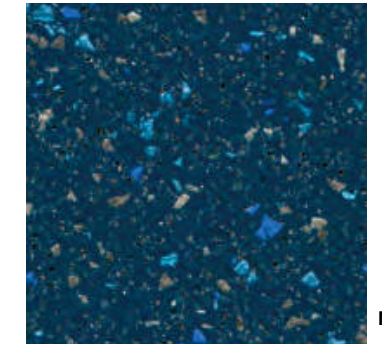
Selenium 8804

NT  
MK



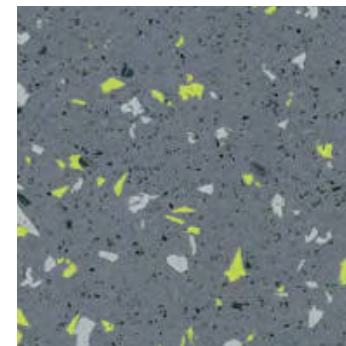
Palladium 8805

NT  
MK



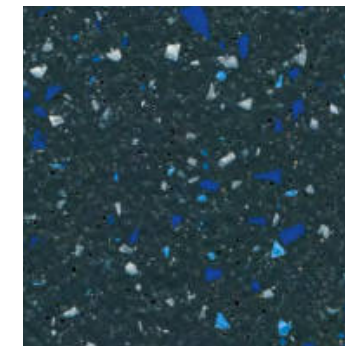
Vanadium 8486

NT



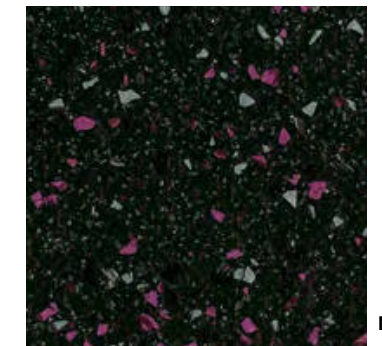
Cerium 3737

NT



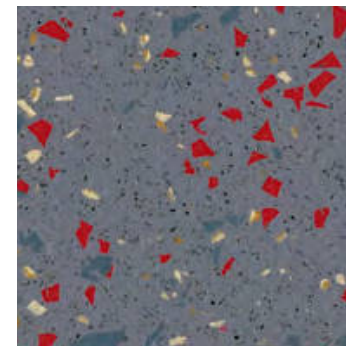
Rhodium 8806

NT  
MK



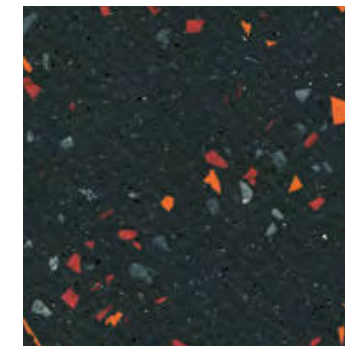
Indium 3740

NT



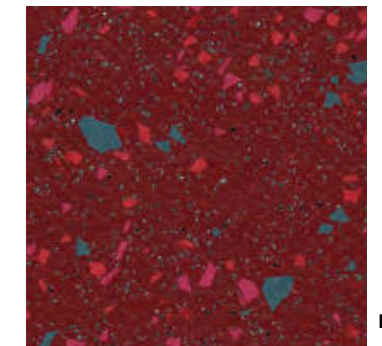
Dubnium 4483

NT  
MK



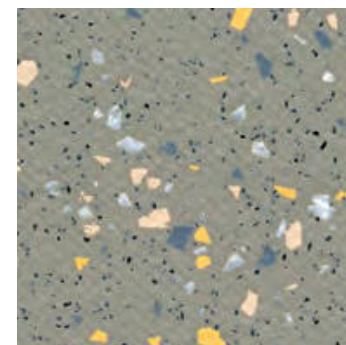
Gallium 8803

NT  
MK



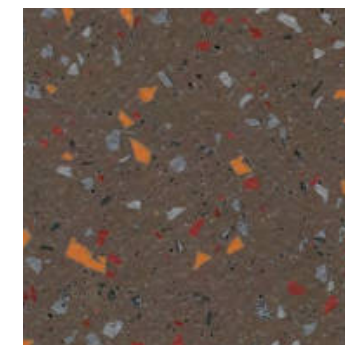
Thorium 4114

NT



Scandium 8333

NT  
MK



Rhenium 8072

NT



Samarium 8031

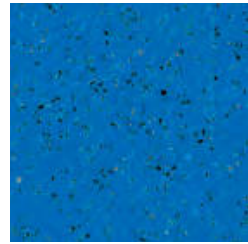
NT

NT= Textile backing  
MK= Foam backing

TARABUS HELIOS

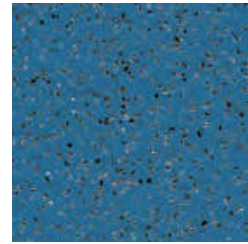


# SIRIUS



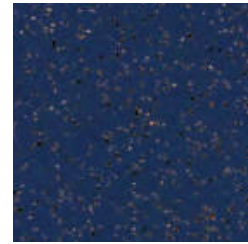
NT

Seram 4461



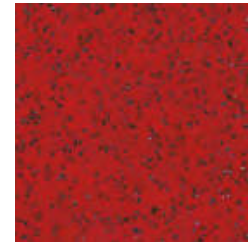
NT

Light Blue 6434



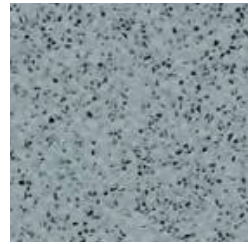
NT

Corsaire 6451



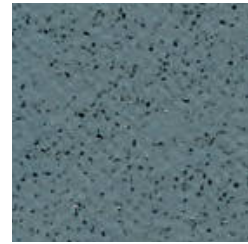
NT

Rubis 6132



NT  
MK

Griffon 6768



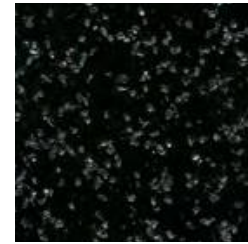
NT  
MK

Dune 6782



NT  
MK

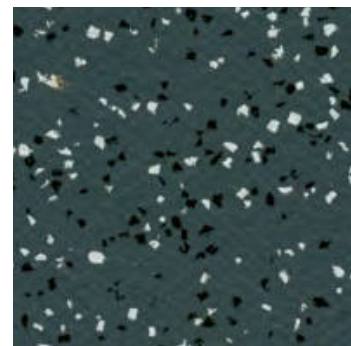
Anthracite 6727



NT  
MK

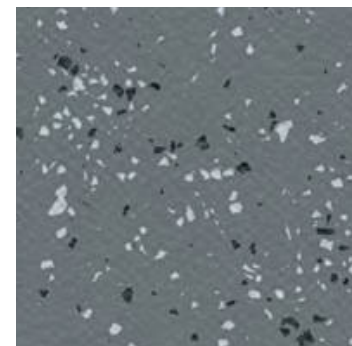
Graphite 6801

# JUPITER



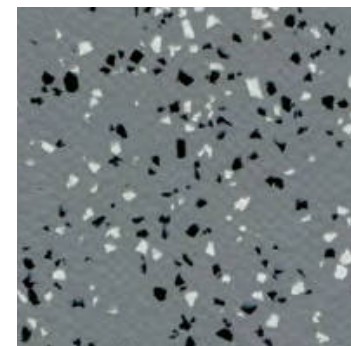
NT

Shetland 8761



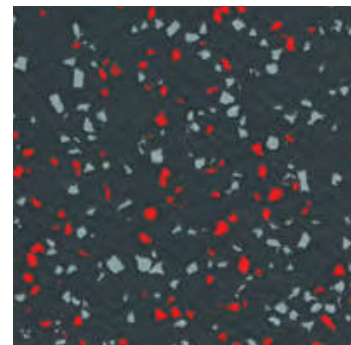
NT

Hessen 4758



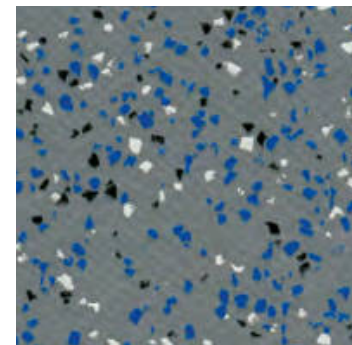
NT

Labrador 8760



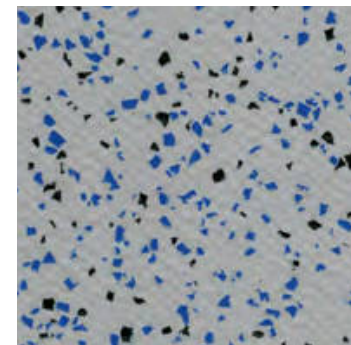
NT

Elara Rot 8764



NT

Tahiti 8485



NT

Adraste blau 8736

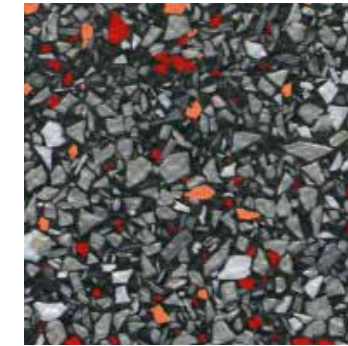
NT= Textile backing  
MK= Foam backing

# JUPITER METALLIC



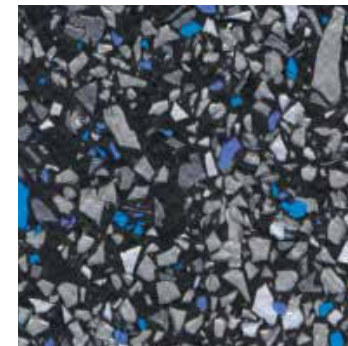
NT

Hudson 6793



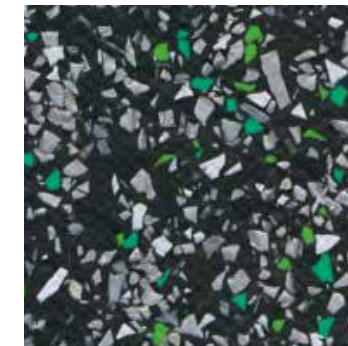
NT

Murray 8114



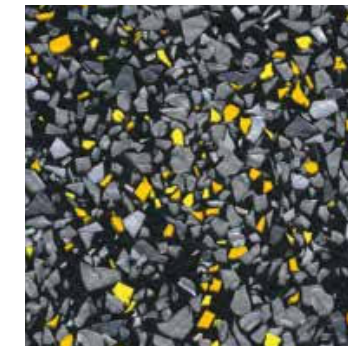
NT

Volga 8401



NT

Mekong 8501



NT

Nile 8796







## TARABUS Self-Adhesive

### • Sustainable bonding solution

- ✓ Cut VOC emissions
- ✓ Eliminate all fumes and odours associated with traditional adhesives
- ✓ Reduce weight compared to traditional adhesives
- ✓ Improve the working conditions of the floor fitters.

### • Enhances installation process

Speed up overall vehicle assembly : easy to install, ready to bond and to be walked on.

### • Solution de collage durable

- ✓ Réduit les émissions de COV
- ✓ Élimine toutes les fumées et odeurs associées aux colles traditionnelles
- ✓ Réduit le poids par rapport aux colles traditionnelles
- ✓ Améliore les conditions de travail des poseurs de sols.

### • Améliore le processus d'installation

Accélère l'assemblage global du véhicule : facile à installer, prêt à coller.

### • Nachhaltige Lösung bei der Verklebung

- ✓ Reduziert VOC Emissionen
- ✓ Beseitigt alle Dämpfe und Gerüche, die mit herkömmlichen Klebstoffen verbunden sind.
- ✓ Verringert das Gewicht im Vergleich zu herkömmlichen Klebstoffen.
- ✓ Verbessert die Arbeitsbedingungen des Verlegers.

### • Optimierte den Einbau

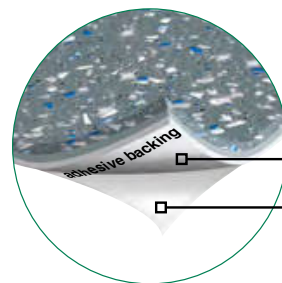
Beschleunigt die gesamte Fahrzeugmontage: Einfach zu installieren, fertig zum Verkleben und schnell begehbar.

### • Solución de pegado duradero

- ✓ Reduce las emisiones de COV
- ✓ Elimina todos los gases emitidos por los pegamentos tradicionales
- ✓ Reduce el peso comparativo a los pegamentos tradicionales
- ✓ Mejora las condiciones de trabajo de los instaladores.

### • Mejora el proceso de instalación

Acelera el ensamblado global del vehículo: fácil a instalar, listo a pegarse



Acrylic Adhesive layer  
Film adhésif acrylique  
Acryl Klebefolie  
Adhesivo acrílico

Protective layer  
Film protecteur  
Schutzfolie  
Papel de protección



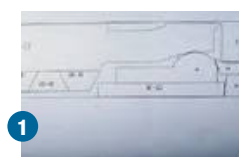
## KIT System

- Precise cutting dimensions
- No installation wastage
- Reduce installation time
- Easy to use

- Découpes précises
- Pas de déchets
- Gain de temps d'installation
- Facilité d'utilisation

- Exakte Abmessungen
- Geringfügiger Verschleiß
- Reduziert Zeitaufwand bei der Installation
- Einfach in der Anwendung

- Dimensiones exactas
- Minimización del desperdicio
- Reducción del tiempo de instalación
- Facilidad de uso



1

Send us your cutting layout  
Envoyez-nous vos plans de découpe  
Schicken Sie uns Ihre Zuschnittsmuster zu  
Envíenos su plano de corte



2

We cut with high precision  
Nous découpons avec précision  
Wir schneiden präzise zu  
Cortamos con precisión



3

We weld carefully  
Nous soudons avec soin  
Wir verschweissen sorgfältig  
Soldamos con mucho cuidado

## Back WELDING for Tarabus NT

### • Aesthetics

The welded seam is no longer visible

### • Easy to clean

No trap for dirt

### • Durability

The welded seam is no longer exposed to foot traffic

### • Esthétique

Le cordon de soudure n'est plus visible

### • Facilité d'entretien

Pas de points d'encrassement

### • Durabilité

La soudure n'est plus soumise au trafic

### • Ästhetik

Die Schweißnaht ist nicht mehr sichtbar

### • Erleichtert die Wartung

Keine Verschmutzung im Bereich der Schweißnaht

### • Langlebigkeit

Die Schweißnaht wird nicht mehr direkt durch Abnutzung beeinflusst

### • Estética

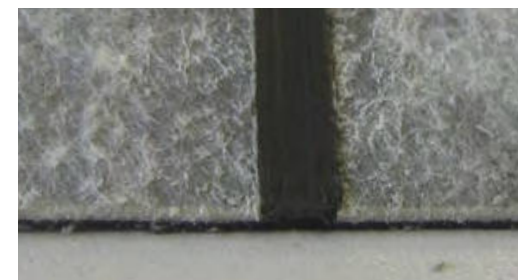
El cordón de soldadura ya no es visible

### • Facilidad de limpieza

No quedan puntos de acumulación de suciedad

### • Durabilidad

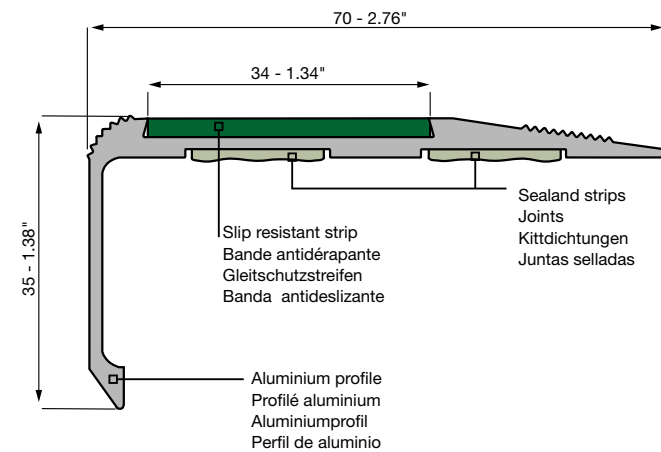
La soldadura ya no queda expuesta al tránsito



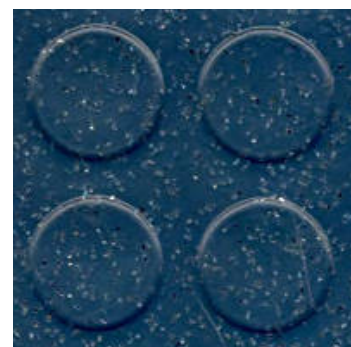


► Stepbus

L : 298 cm/117.3"



► Venus



Schwarzwald 4419

NT

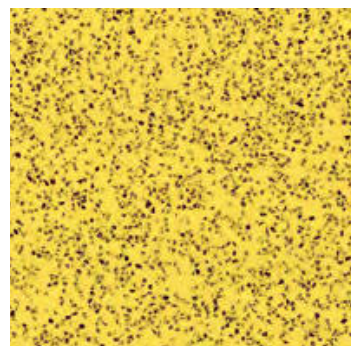


Anthracite 6727

NT

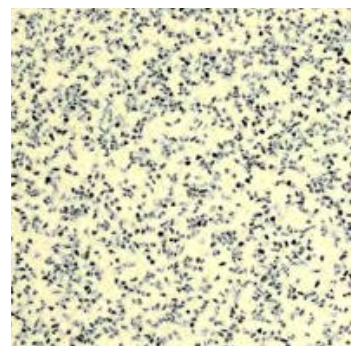
► Safebus

Borneo 6203

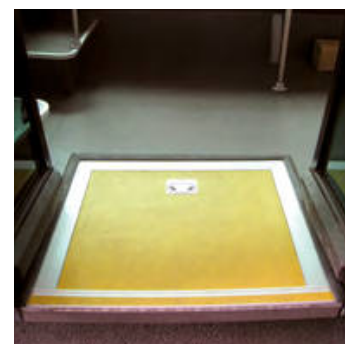


NT  
MK

Caledonia 6602



NT



TARABUS LOGO

Tarabus Laminated Logotile is a sustainable solution to provide intelligent onboard signage and wayfinding.

• A safe & durable solution :

- ✓ Watertight system with Laminate backing
- ✓ Anti-skid
- ✓ Long lasting

• A variety of designs :

Unlimited possibilities within the Tarabus colour range

- Also available with Self-Adhesive and foam backing options

• Une solution sûre et durable :

- ✓ Système étanche à l'eau avec le support composite.
- ✓ Antidérapant
- ✓ Longue durée de vie

• Une variété de designs :

Possibilités illimitées dans la gamme de couleurs Tarabus

- Également disponible avec l'option Auto-adhésive et l'envers MK

• Eine zuverlässige und dauerhafte Lösung:

- ✓ Wasserdichtes System mit Laminatrücken
- ✓ Anti-Rutschverhalten
- ✓ Lange haltbar

• Eine Vielzahl von Designs:

Unbegrenzte Möglichkeiten innerhalb der Tarabus-Farbpalette

- Auch erhältlich in Selbstklebend und mit geschäumter Rückseite

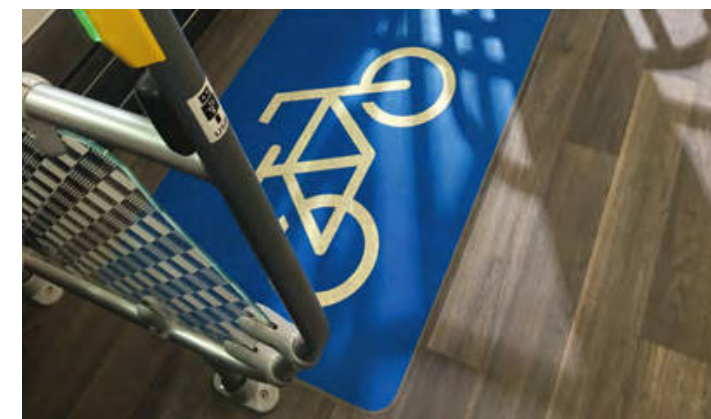
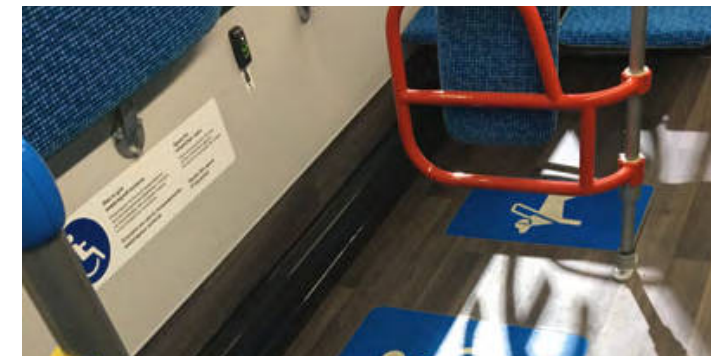
• Une solución segura y durable

- ✓ Sistema impermeable con soporte laminado
- ✓ Antideslizante
- ✓ Largo tiempo de vida

• Una gran variedad de diseños:

Posibilidades ilimitadas dentro de la gama de colores Tarabus

- Igualmente disponible con la opción autoadhesiva y reverso MK.







# TARABUS

FLOORING FOR BUS & COACH INTERIORS

43, Boulevard Garibaldi  
69170 Tarare - France  
Tel.: +33 4 74 05 40 00  
Fax: +33 4 74 05 06 83  
Email: [tarabus@gerflor.com](mailto:tarabus@gerflor.com)  
[www.tarabusbygerflor.com](http://www.tarabusbygerflor.com)



**Gerflor**<sup>®</sup>  
theflooringgroup

